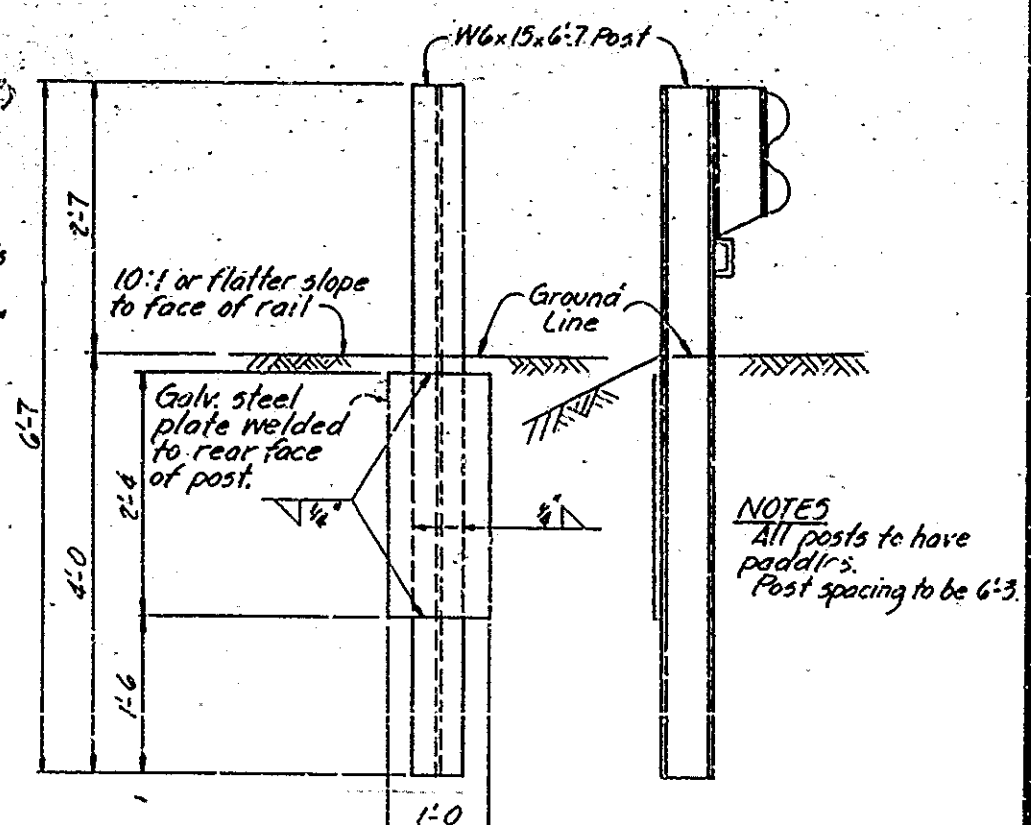


UTILITY OWNERS
 Telephone: Continental Telephone Co. of Ind.
 1233 West Tipton St.
 Seymour, Indiana 47274
 Indiana Bell
 5870 North College Ave.
 Indianapolis, Indiana 46220
 Power: Bartholomew County R.E.M.C.
 801 Second St.
 P.O. Box 467
 Columbus, Indiana 47202

Note: Hatched areas indicate portions to be removed.

NOTE
 Eliminate flat plate washers (3/16") from under the head of the bolt holding W-beam to blockout except where washers are needed to transmit the forces in the W-beam to the anchor posts to obtain and anchorage. For example, if both ends of a guard rail run had positive anchorage of a bridge pier or through a buried end all of the 3/16" plate washers shall be eliminated. However, if the guard rail run ended without a positive connection, anchorage would have to be achieved through the last 6 or 7 posts and the washers must be left on these posts.



NOTE
 Surface Seal all exposed concrete areas on end bents and the exposed top of the ends of the interior piers.

NOTE
 Remove all existing guard rail. (Approx. 528 Lft.)

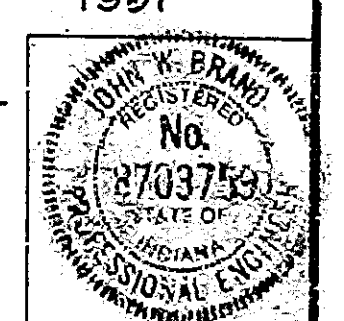
NOTE
 See Drwg. D3 for General Notes, Construction Procedure, Material Notes and Standard Drawings.

NOTE
 Existing Guard Rail and Bridge Rail removed shall remain the property of I.D.O.H.

GENERAL PLAN
DECK RECONSTRUCTION AND OVERLAY
CONTINUOUS PRESTRESSED CONC. I-BEAM BRIDGE
 3 SPANS: 34:3, 35:0, 34:3 SKEW 15° RT. 43:6 CLR. ROADWAY ON US 31 OVER LITTLE SAND CREEK
INDIANA DEPARTMENT OF HIGHWAYS
 BARTHOLOMEW COUNTY

SCALE: AS NOTED DATE: November 5, 1997

SUBMITTED FOR APPROVAL: *John W. Brand*
 DRAWING: D2 OF 6 SHEET: 5 OF 26
 PROJECT: RS-4703 (3)
 BRIDGE CONTRACT NO. B-17184
 BRIDGE FILE: 31-03-6062A



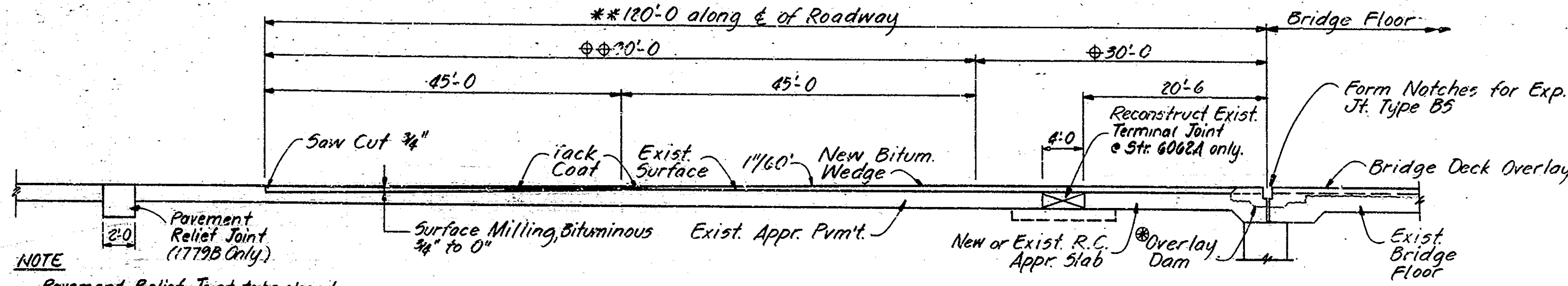
DESIGNED: J. Brand
 DRAWN: T. Hutton
 TRACED: CKD

SF-2237

NOTE

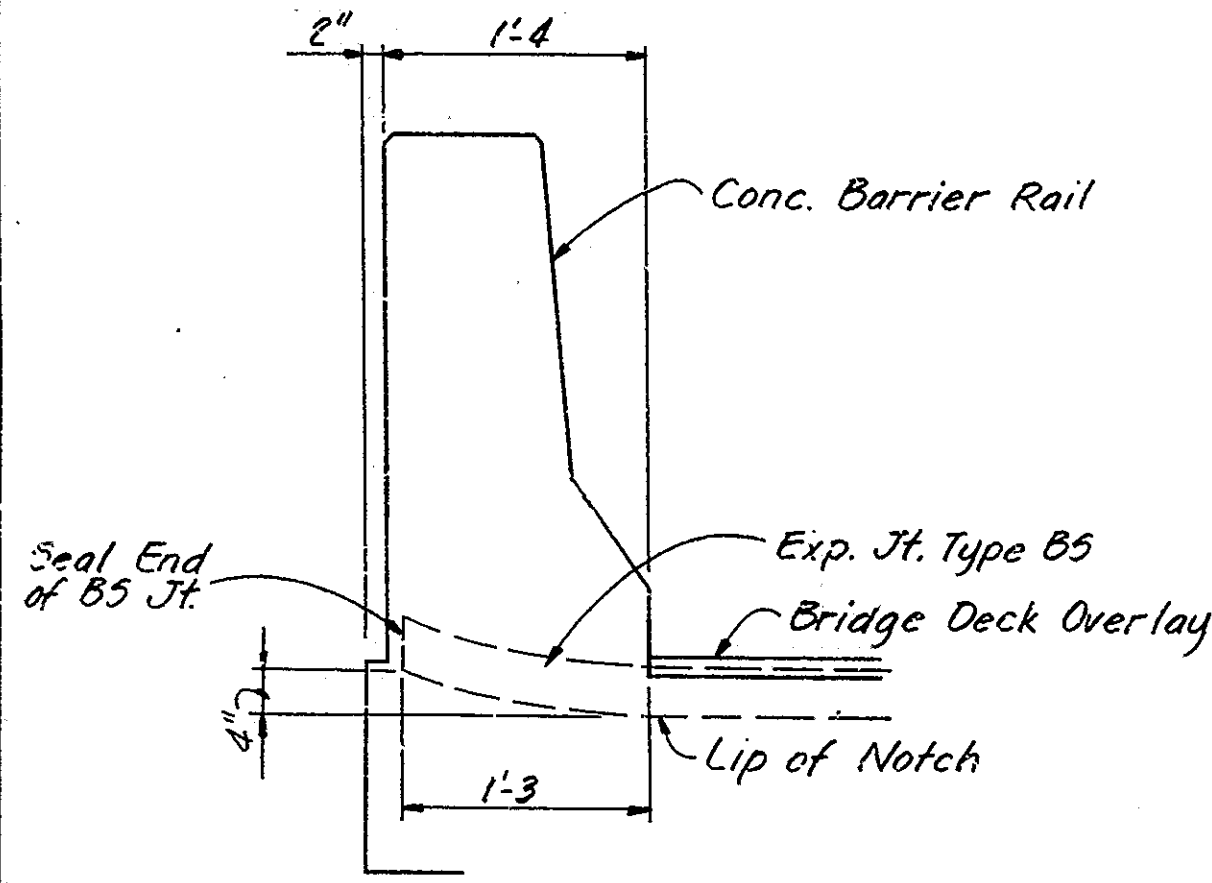
The pay quantity for Surface Milling, Portland Cement Concrete shall include only that portion of the bridge deck which is to remain in place. The ends of bridge floor removed for installation of expansion joints or replacement of damaged ends are not to be included in this pay item. Those underlaid areas requiring full depth removals will still be included in pay quantity for Surface Milling, Portland Cement Concrete.

- Top of wedge shall be a continuation of bridge deck profile.
- Top of wedge shall be tapered uniformly to meet existing pavement.
- Dimensions req'd. with 1 1/4" Bridge Deck Overlay. (See the Special Provisions if 2 1/4" Bridge Deck Overlay is used.)



NOTE
Pavement Relief Joint to be placed at first pavement joint beyond wedge limits or as directed by the Engineer.

BITUMINOUS WEDGE APPROACH SECTION
Not to Scale



SECTION THRU B5 JOINT
Not to Scale

GENERAL NOTES

Plans for the existing structure are on file in the Central Office as Bridge File: 31-03-1779A and 31-03-6062 and are available upon request.

Where new work is to be fitted to old work, the Contractor shall check all dimensions and conditions in the field and report any errors or discrepancies to the Engineer and assume responsibility for their correctness and the fit of the new part to the old.

The hand chipping and cleaning of deteriorated deck areas shall be as directed by the Engineer. It is the intent of these plans that all such deteriorated concrete be removed and, should there be any doubt as to the quality of the concrete, removal shall continue until PERFECTLY SOUND CONCRETE is exposed. All existing non-full depth patches shall be removed.

Concrete in patches for deteriorated deck areas below milled depth shall be Modified Portland Cement Concrete or Bridge Deck Patching Concrete. See the Supplemental Specifications.

For the composition of concrete in overlay dams, see the Special Provisions.

The boundaries of full depth removal areas shall be saw cut. All saw cuts shall be a minimum depth of 1 inch below the original surface or to the top of reinforcing steel if cover is less than 1 inch.

Concrete in barrier rail shall be Class "C".

All bituminous material required in this contract shall be included in the pay item "Bituminous Mixture for Approaches" except tack coat which shall be paid for as a separate item.

Seal all exposed concrete surfaces as noted on the plans with a penetrating epoxy sealer.

The length and quantity of bituminous wedging shown on the plans is based on the use of the Modified Portland Cement Concrete Overlay. See Special Provisions.

Seal all joints and cracks in the approach pavement with a hot poured joint sealer before placing the bituminous wedges. Cost to be included in other items of the Contract.

Not req'd. on Widened Portions of Appr. Slabs or Reconstructed portions of Mudwall. (See Drwg. D5 for Reconstruction Limits of Mudwall.)

CONSTRUCTION PROCEDURES

Structure 31-03-1779B:
Two lanes of traffic are to be maintained on the structure at all times. Work shall be completed in three phases as shown on Sheet 2.

Structure 31-03-6062A:
One lane of traffic is to be maintained on the structure at all times by the use of temporary automatic overhead signals as shown on Sheet 3.

Remove existing railing.

Remove a portion of existing R.C. approach slab.

Mill the bridge floor to a depth of 1/4 inch.

Mill additional areas of the bridge floor an additional 1/4 inch as directed by the Engineer. Remove milled dust.

Remove existing patches and all deteriorated concrete below the level of milling around exposed reinforcing and along areas inaccessible to milling equipment.

Widen R.C. approach slabs to accommodate concrete barrier rail transitions.

Construct concrete barrier rail.

Blast and clean all removal and milled deck areas.

Place the bridge deck patching and overlay as shown on the plans and in accordance with the Supplemental Specifications. Install "B5" expansion joints.

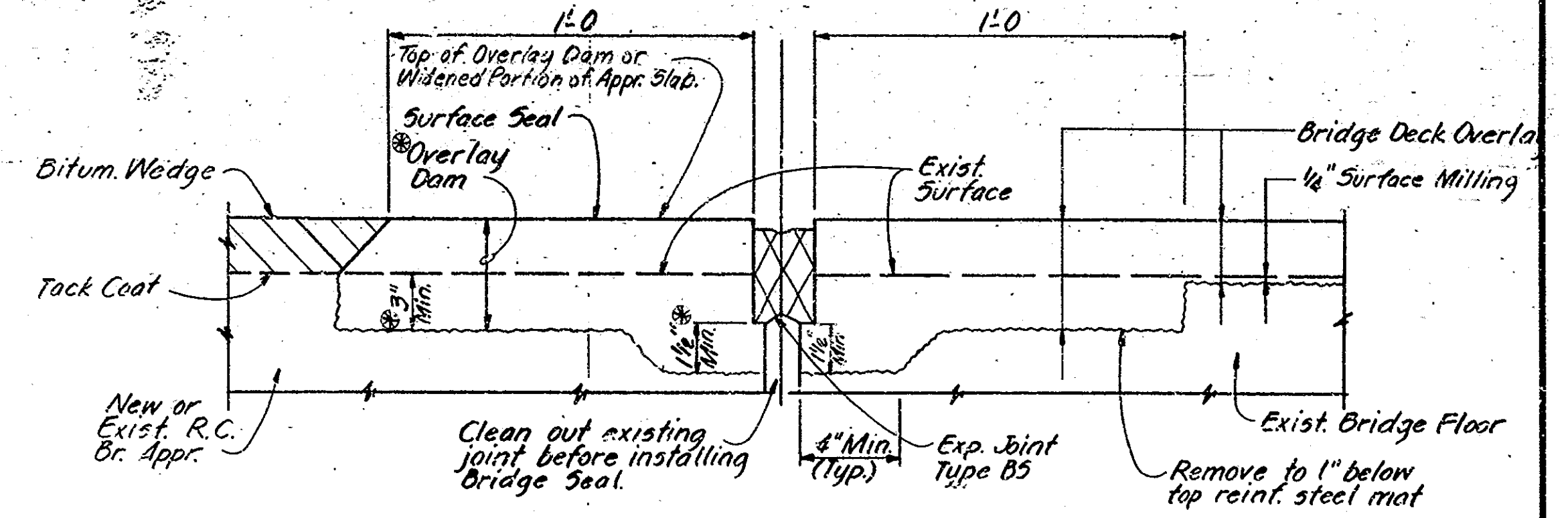
Clean and seal exposed concrete surfaces including the exposed top of the end of the plans as Str. 6062A as shown on the plans with a penetrating epoxy sealer.

Place the bituminous wedge and level courses and construct all other work shown on the plans, including the removal and installation of guard rail.

The sequence of the above notes does not necessarily indicate the sequence of operations.

REMOVAL EQUIPMENT

Pneumatic hammers up to a maximum weight of 45 lbs. may be used for all removal areas to be patched in the deck and all deck areas within 24 inches of full depth removal lines. Concrete splitters may also be used for partial concrete removals subject to satisfactory performance. If at any time during the removal process the tools or methods being used appears to cause damage (cracks, spalling, etc.) to the concrete that is to remain, the work shall cease immediately and shall not resume until the engineer is assured the tools or methods being used will not cause further damage.



TYPICAL SECTION AT ABUTS (1779B)
Scale: 3"=1'-0"

MATERIAL NOTES

Bridge Deck Overlay:

1-3/4 inches Modified Portland Cement Concrete or 2-1/2 inches Dense Portland Cement Concrete (1-1/2 inches or 2-1/4 inches respectively above original surface.)

Bituminous Wedge:

110 pounds per square yard H.A.C. Surface Type 11 over variable depth bituminous binder or base.

Bituminous Widening:

990 pounds per square yard bituminous base, Type 5D.

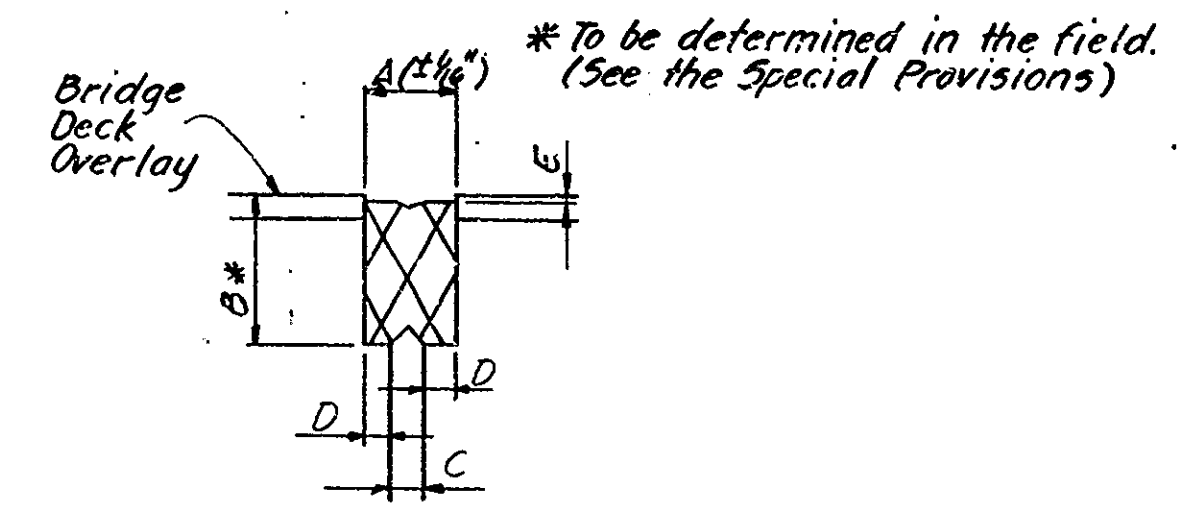
Bituminous Shoulder:

660 pounds per square yard bituminous base, Type 5D.

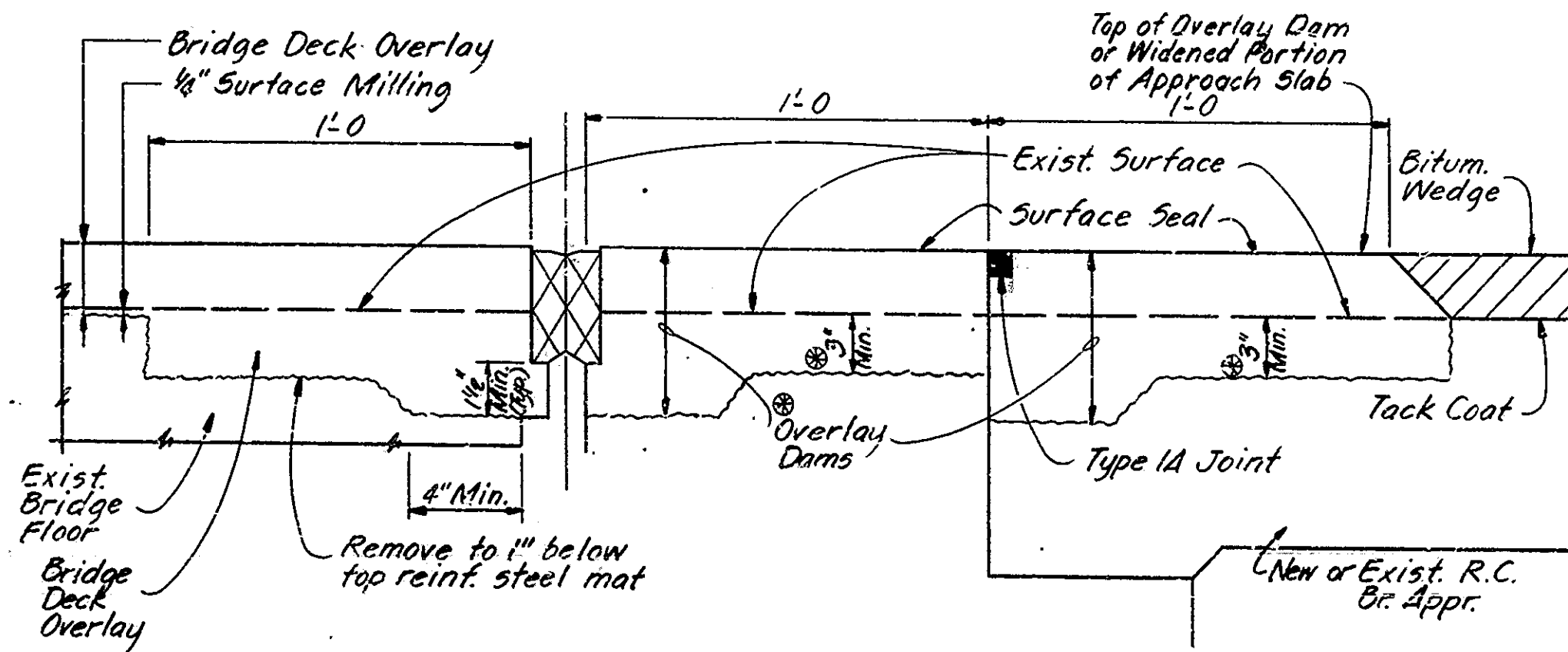
Pavement Relief Joint:

110 pounds per square yard H.A.C. Surface, Type 11, over 1,870 pounds per square yard Bituminous Base.

Bridge Seal	A	B	C	D	E
B56	1 3/8"	1"	3/4"	3/8"	1/2"
B59	2 3/8"	2"	1 1/2"	1 1/4"	3/4"



EXP. JOINT TYPE B5
Not to Scale



TYPICAL SECTION AT END BENTS (6062A)
Scale: 3"=1'-0"

STANDARD DRAWINGS		
BRIDGE ROAD	DESCRIPTION	
CI	Reinforcing Bar Notes	
BR5	Railing Connection Details	
C3	Constr. Joint Type A & Exp. Jt. Type B5	
CB2	Temporary Concrete Barrier	
GR2	Guard Rail Class H6 # B5	
GR4A	Guard Rail Class H5	
GR7	Railing Connection Bracket	
GR10	Guard Rail Buried Ends	
MA	R.C. Bridge Approach	
MT3	Sign Standards	
1	Standard Detour Signs	
2	Standard Detour Signs	
2A	Standard Detour Signs	
3	Standard Detour Signs	
4	Standard Detour Signs	
5	Standard Detour Signs	

DETAILS
INDIANA DEPARTMENT OF HIGHWAYS

BARTHOLOMEW COUNTY
SCALE: - AS NOTED DATE: November 5, 1987

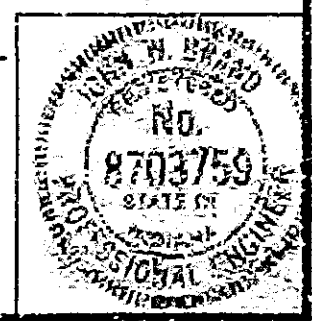
SUBMITTED FOR APPROVAL: John W. Brand

DRAWING: 03 OF 6 SHEET: 6 OF 26

PROJECT: R5-4703(3)

BRIDGE CONTRACT NO. B-17184

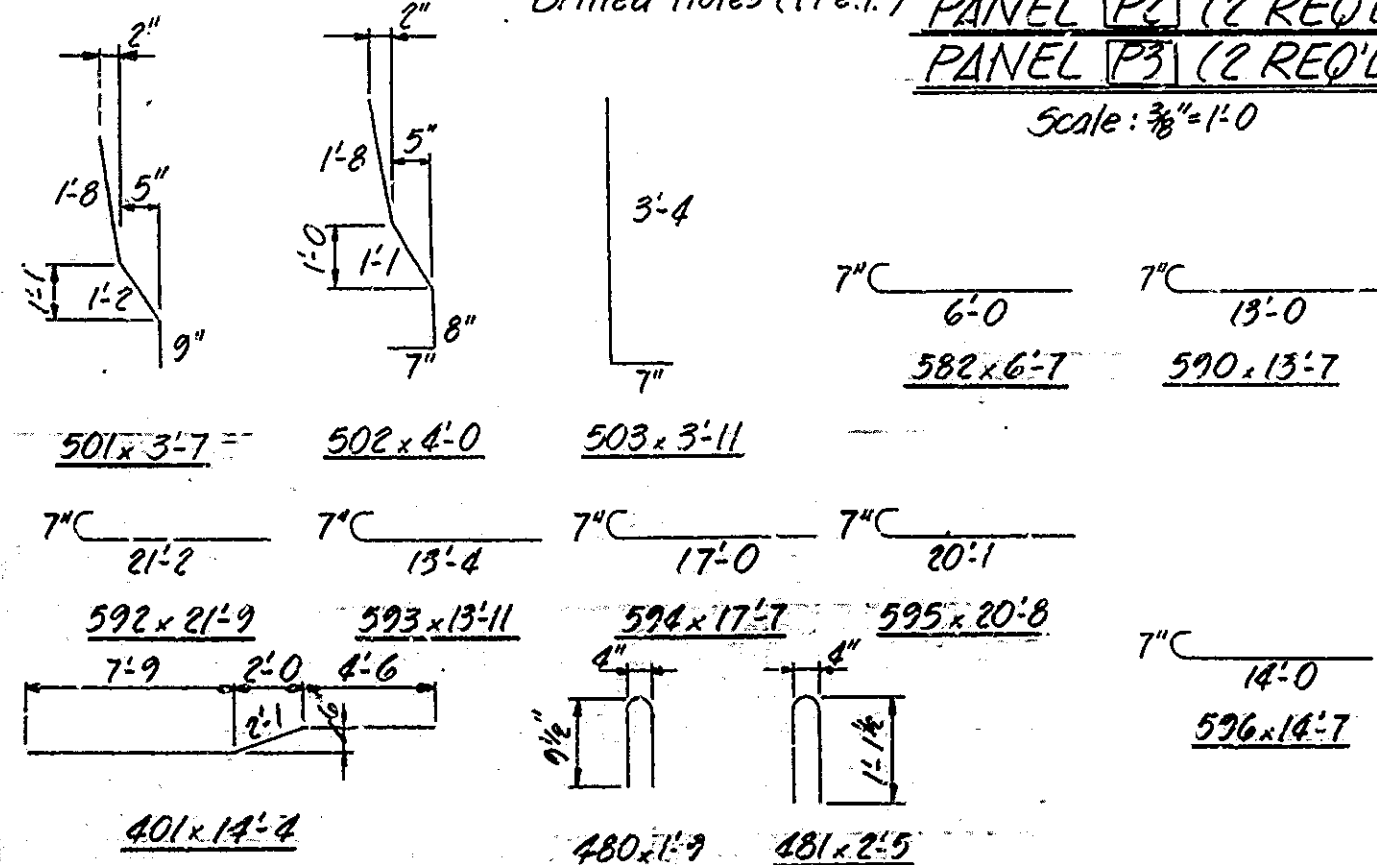
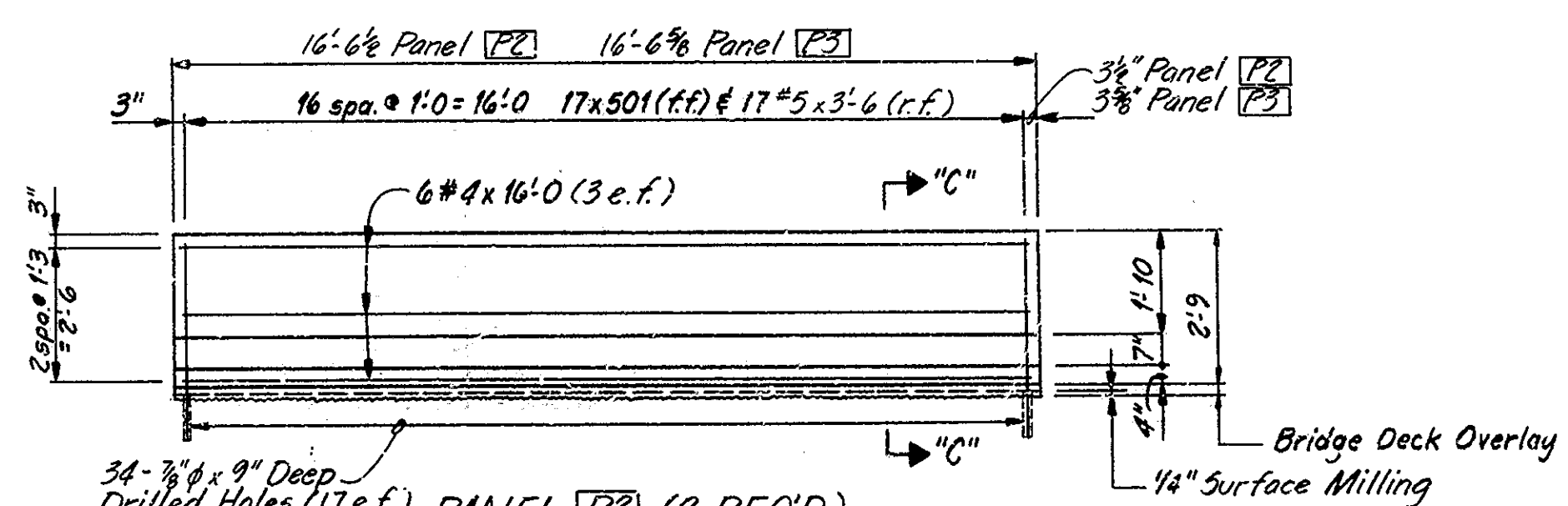
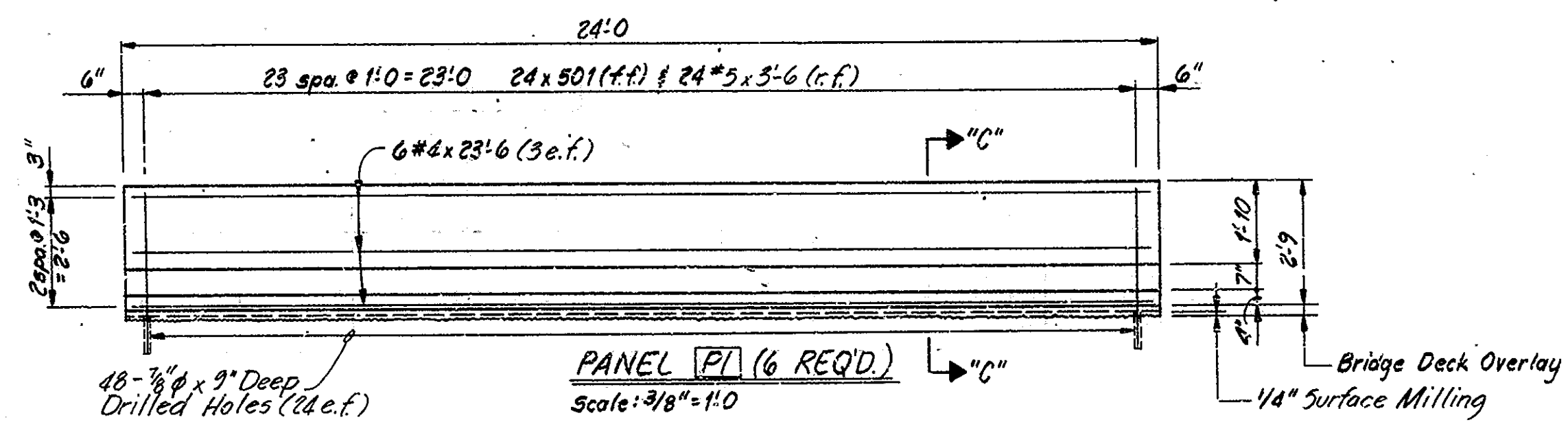
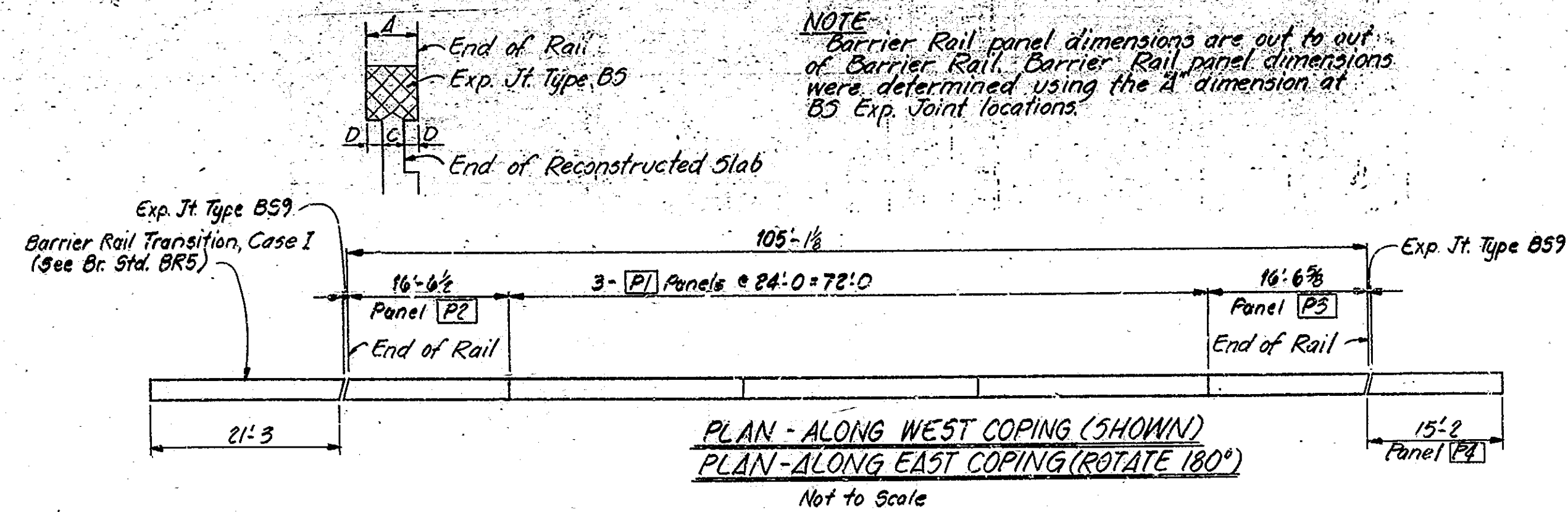
BRIDGE FILE: 31-03-1779B & 31-03-6062A



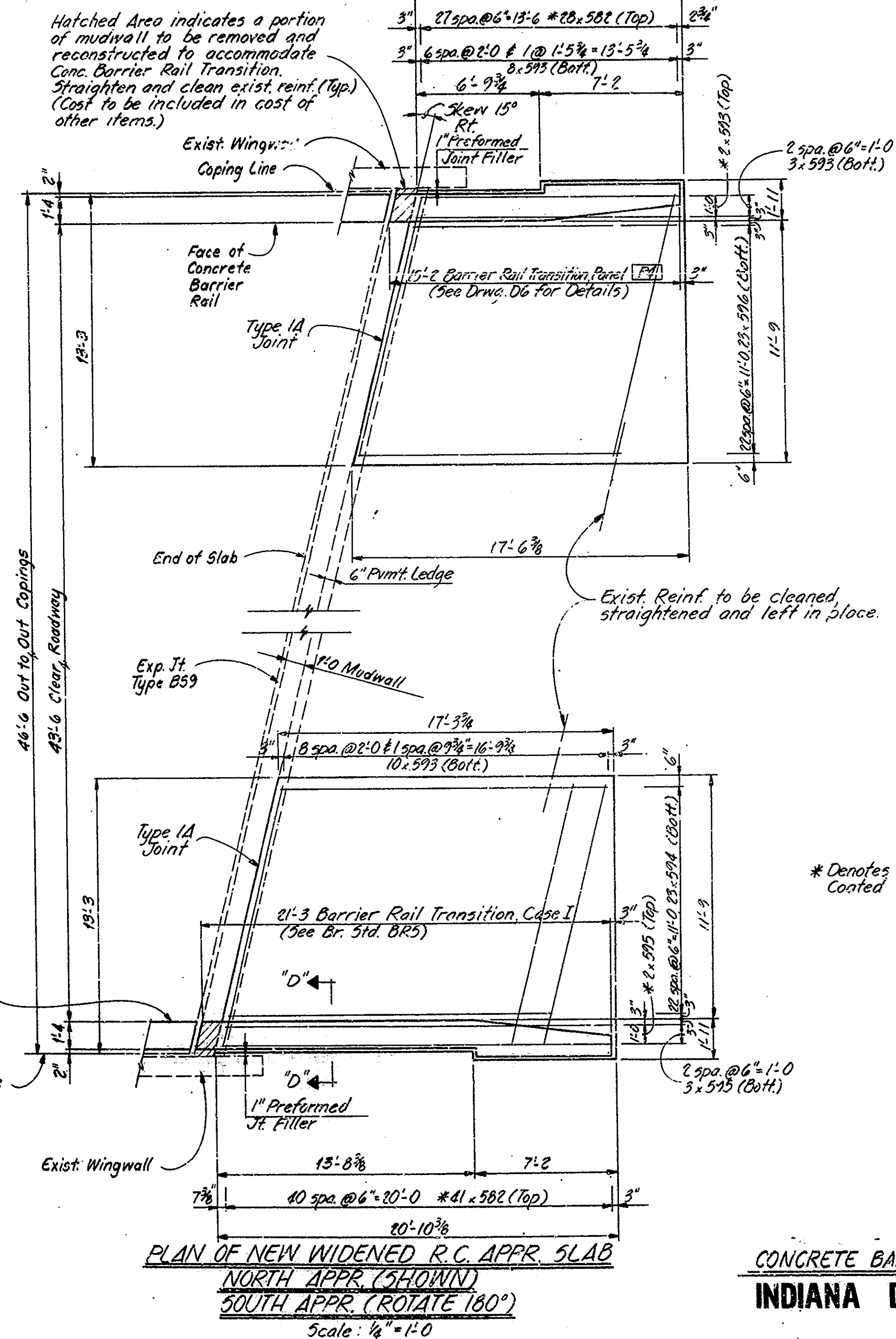
DESIGNED: Brand, CKD
DRAWN: D. Shultz, CKD, J. Brand
TRACED: CKD

SF-22317

Rev. 12-11-87 General Notes



BAR BENDING DETAILS
Not to Scale



NOTES:
See Br. Std. D4 for Sections "C-C" & "D-D".
See Br. Std. C1 for Reinforcing Bar Notes.
All reinforcing in Barrier Rail to be Epoxy Coated.

BILL OF MATERIALS
CONC. BARRIER RAIL

REINFORCING STEEL (Epoxy Coated)			
Mark or Size	No. of Bars	Length (FT)	Weight (Lbs)
501	212	3'-7"	
502	12	4'-0"	
503	66	3'-11"	
#5	212	3'-6"	
Total #5			1886
401	6	14'-4"	
480	8	1'-9"	
481	6	2'-5"	
#4	36	25'-6"	
#4	24	16'-0"	
#4	2	3'-0"	
#4	6	8'-0"	
#4	8	6'-6"	
Total #4			977
Total Steel (Epoxy Coated)			2863

CONCRETE

Class "C" Conc. Railing 281 Lft.
(Approx. 32.1 Cys.)

Field Drilled Holes in Concrete 424 Ea.

Note: The above Bill of Materials does not include the following quantities for Std. Barrier Rail Transition, Case I:
Epoxy Coated Reinf. Steel = 656 Lbs.
C1" Conc. Railing = 45 Lft. (Approx. 4.2 Cys.)
(See Br. Std. BR5)

BILL OF MATERIALS
R.C. APPROACH SLABS

REINFORCING STEEL			
Mark or Size	No. of Bars	Length (FT)	Weight (Lbs)
582	138	6'-7"	
593	42	15'-11"	
594	46	17'-7"	
595	4	20'-8"	
596	6	20'-8"	
597	46	14'-7"	
593	4	13'-11"	
Total Steel (Plain)			2282
Total Steel (Epoxy Coated)			1092

CONCRETE

Conc. Parit. Reinf. (10") 104 Cys.

MISCELLANEOUS

Type "O" Comp. Aggr. Base (6") 35 Tons

CONCRETE BARRIER RAIL AND R.C. APPROACH SLAB DETAILS

INDIANA DEPARTMENT OF HIGHWAYS

BARTHOLOMEW COUNTY

SCALE: AS NOTED DATE: November 5, 1987

SUBMITTED FOR APPROVAL: John W. Brand

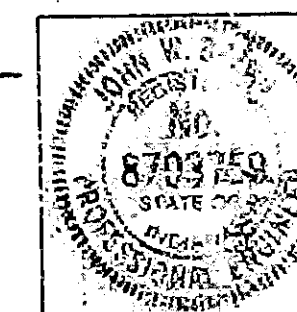
DESIGNED: J. Brand, CKD

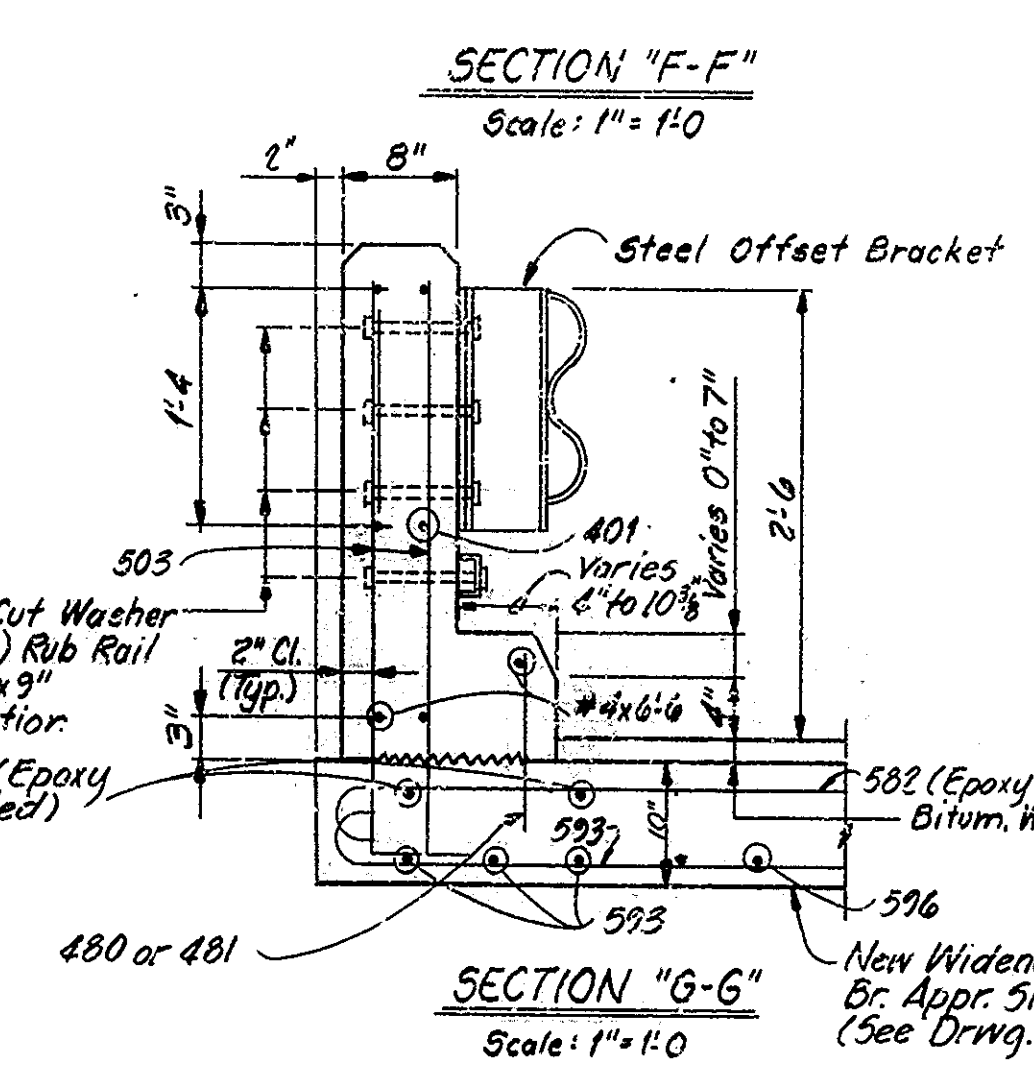
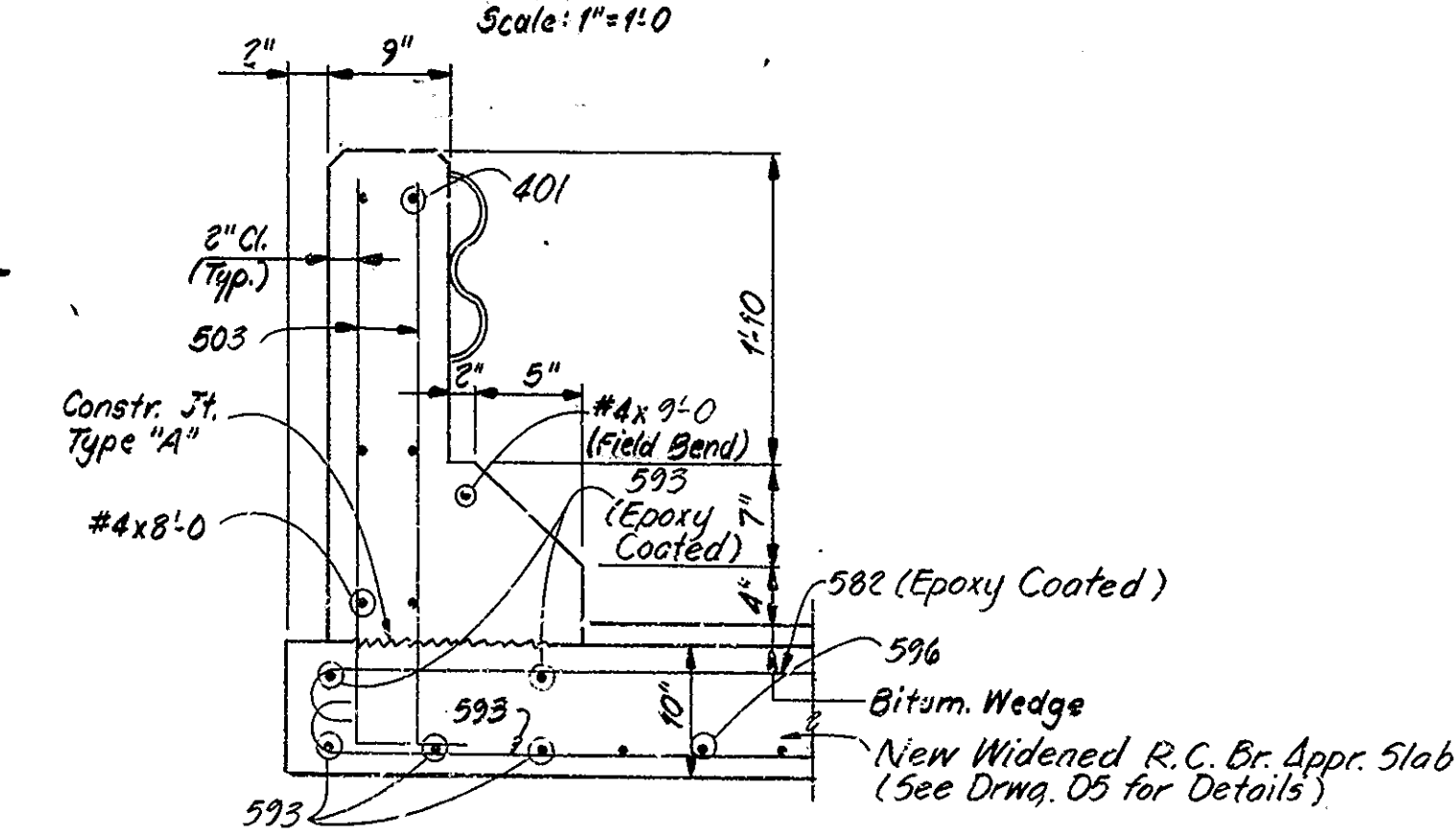
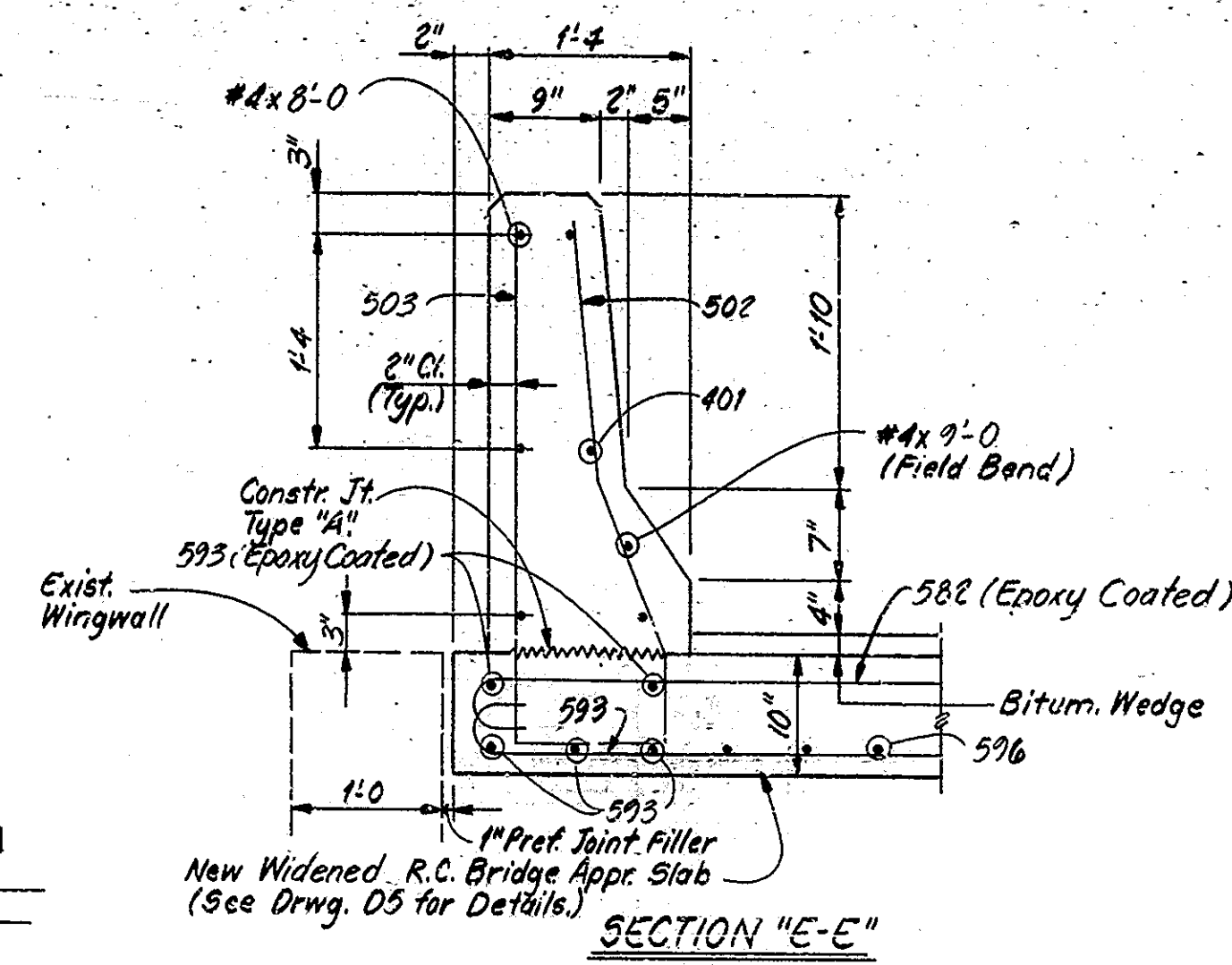
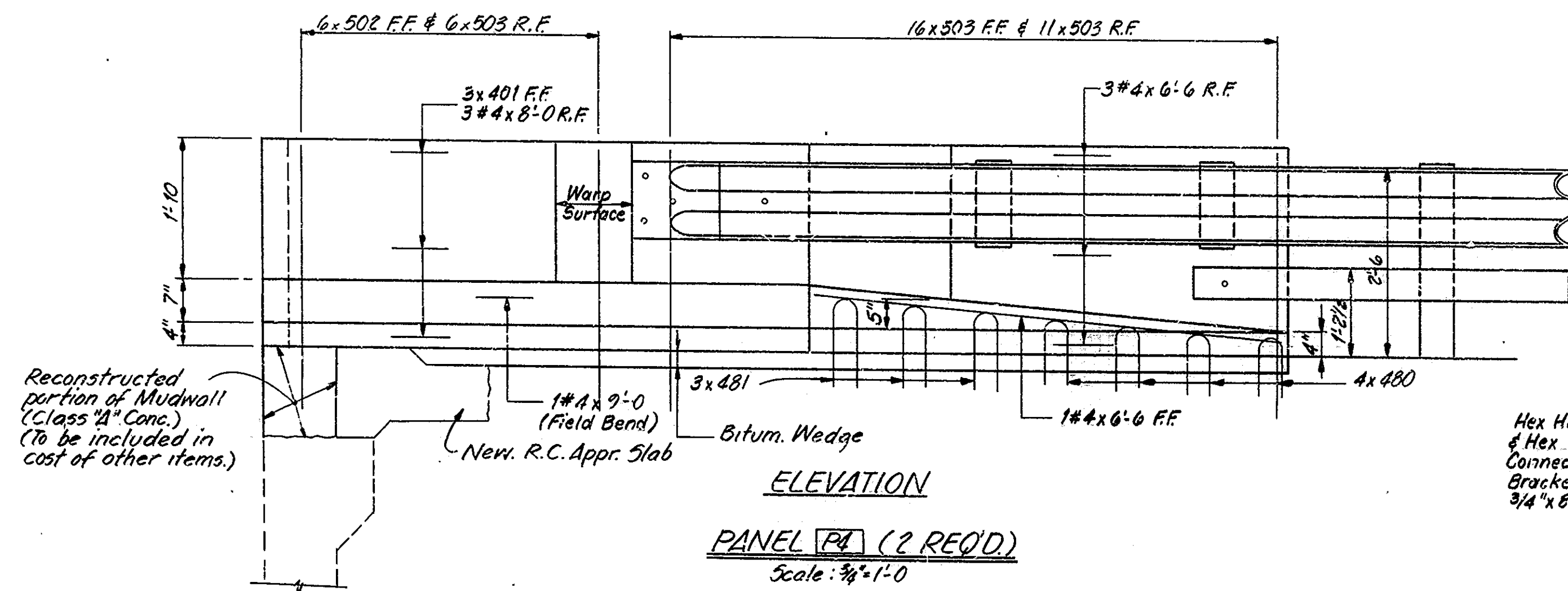
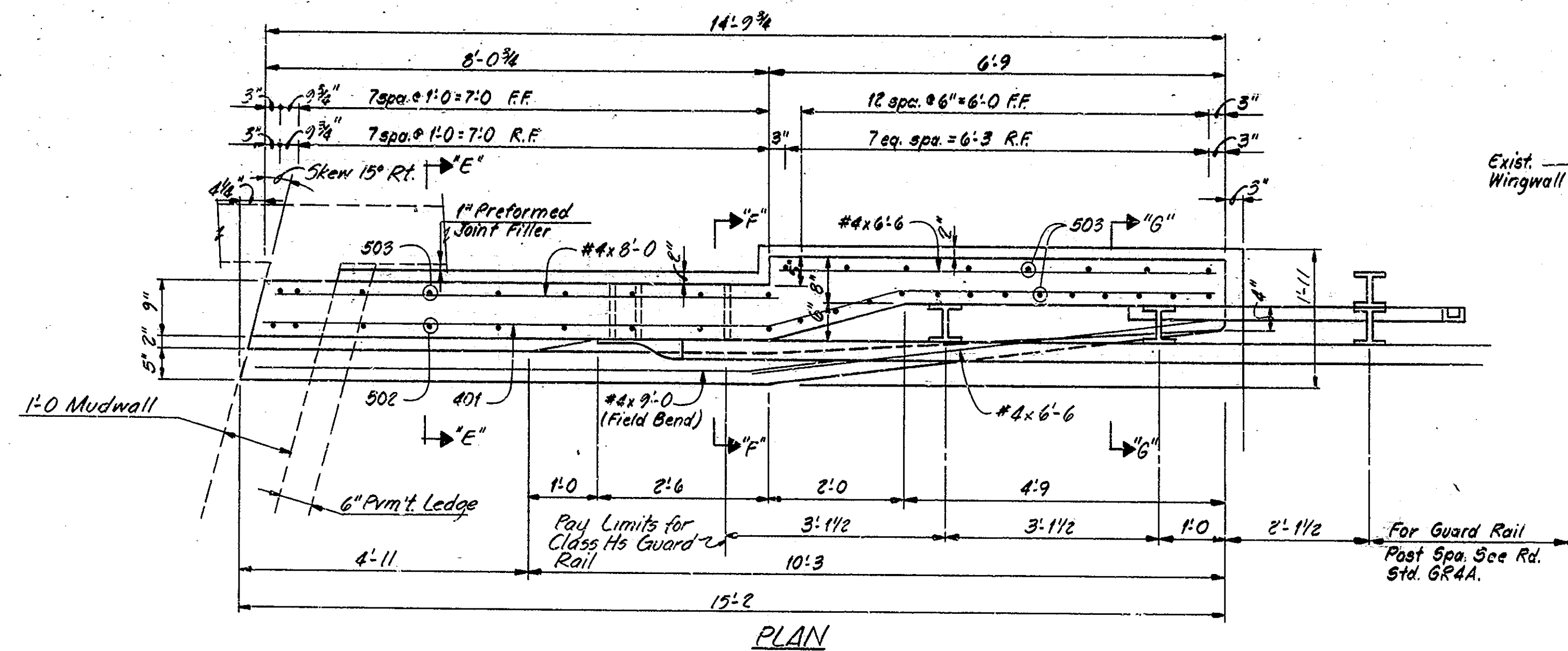
DRAWN: J. Hutton, CKD

PROJECT: AS-4703(3)

BRIDGE CONTRACT NO. B-17184

BRIDGE FILE: 31-03-6062A

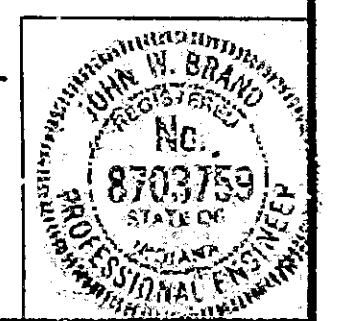




NOTES
 See Drwg. D5 for Bar Bending Details and Bill of Materials.
 See Br. Std. BR5 for additional details of Concrete Barrier Rail.
 See Br. Std. C1 for Reinforcing Bar Notes.
 See Br. Std. C3 for Type "A" Constr. Joint.
 All reinforcing in Barrier Rail to be Epoxy Coated.

CONCRETE BARRIER RAIL DETAILS
INDIANA DEPARTMENT OF HIGHWAYS
 BARTHOLOMEW COUNTY
 SCALE: - AS NOTED DATE: - November 5, 1987
 SUBMITTED FOR APPROVAL: *John W. Brand*
 DRAWING: 06 OF 6 SHEET: 9 OF 26
 PROJECT: - R5-4703 (13)
 BRIDGE CONTRACT NO. B-17184
 BRIDGE FILE: - 31-03-6062 A

DESIGNED: J. Brand C.K.D.
 DRAWN: I. Hutton C.K.D. J. Brand
 TRACED: C.K.D.
 SF-22317



STRUCTURE PAY ITEMS					
CODE NO.	DESCRIPTION	UNIT	STRUCTURE		TOTAL QUANTITY
			1779B	6062A	
51001	MOBILIZATION AND DEMOBILIZATION	LSUM			
51002	CONCRETE, CLASS C IN SUPERSTRUCTURE	CYS.			
51001	CONCRETE, CLASS A IN SUPERSTRUCTURE	CYS.			
51005	CONCRETE, CLASS A IN SUBSTRUCTURE	CYS.			
51010	CONCRETE, CLASS B ABOVE FOOTINGS	CYS.			
51015	CONCRETE, CLASS B IN FOOTINGS	CYS.			
51873	SPECIAL CONCRETE	CYS.			
51046	CONCRETE FOUNDATION SPAL	CYS.			
51045	CONCRETE STRUCTURAL MEMBERS	LSUM			
51813	PNEUMATICALLY PLACED MORTAR	SFT.			
51814	WELDED STEEL WIRE FABRIC	SFT.			
51870	REPOINTING MASONRY IN STRUCTURES	SFT.	20		20
51875	SPECIAL CLASS A CONCRETE	SFT.			
51030	REINFORCING STEEL	LBS.	3045	2282	5327
51032	EPOXY COATED REINFORCING STEEL	LBS.	2031	4611	6642
51035	STRUCTURAL STEEL	LBS.			
51038	STRUCTURAL STEEL	LSUM			
51070	ANCHOR PLATES (MK-AP 1)	EACH			
51075	ANCHOR PLATES (MK-AP 2)	EACH			
51080	ANCHOR PLATES (MK-AP 3)	EACH			
51085	ANCHOR PLATES (MK-AP 4)	EACH			
51112	ANCHOR BOLTS	EACH			
51114	ANCHOR BOLT NR-22	EACH			
51100	CAST IRON DRAIN PIPE, 6 INCH	IDS.			
51110	CAST IRON, GRATES, BASINS AND FITTINGS	IDS.			
51092	STEEL PIPE CONDUIT (2 INCH)	LFT.			
51029	CLASS C, CONCRETE RAILING	LFT.	205	284	489
51014	CLASS A, CONCRETE RAILING	CYS.			
51115	RAILING (TYPE 5 or C)	LFT.			
51120	RAILING (TYPE 5A or C1)	LFT.			
51125	RAILING (TYPE 6 or D)	LFT.			
51130	RAILING (TYPE 7 or E)	LFT.			
51131	BARRIER RAILING TYPE X	LFT.			
51127	BARRIER RAILING TYPE Y	LFT.			
51132	RAILING RESET	LFT.			
51134	REMOVAL OF PRESENT RAILING	LFT.			
51128	ALUMINUM BARRIER RAIL	LFT.			
51123	ALUMINUM PEDESTRIAN RAIL	LFT.			
	ALUMINUM POST (TYPE)	EACH			
	ALUMINUM POST AND ANCHORAGE (TYPE)	EACH			
51881	EXPANSION JOINT, TYPE BS2	LFT.	46		46
51885	EXPANSION JOINT, TYPE BS6	LFT.			
51887	EXPANSION JOINT, TYPE BS8	LFT.			
51888	EXPANSION JOINT, TYPE BS9	LFT.	46	96	142
51890	EXPANSION JOINT, TYPE BS11	LFT.			
51925	EXPANSION JOINT, CLASS S-S	LFT.			
51926	EXPANSION JOINT, CLASS T-S	LFT.			
51927	EXPANSION JOINT, MODULAR	LFT.			
51859	PAINTING OLD STEEL BRIDGE	LSUM			
51861	PAINTING BEARING ASSEMBLIES	LSUM			
51215	CLASS X EXCAVATION	CYS.			
51220	CLASS Y EXCAVATION	CYS.			
51221	WET EXCAVATION	CYS.			
51225	DRY EXCAVATION	CYS.			
51230	FOUNDATION EXCAVATION (UNCLASSIFIED)	CYS.			
	SURFACE SEAL (1779B)*	LSUM	1		1
	SURFACE SEAL (6062A)*	LSUM		1	1

* Estimated Quantity: 3060 Sft (1779B)
3745 Sft (6062A)

SUMMARY ED. D. Sheetz C.K.D. J. Brand
TRACED D. Sheetz C.K.D. J. Brand

SF-2238A

STRUCTURE PAY ITEMS					
CODE NO.	DESCRIPTION	UNIT	STRUCTURE		TOTAL QUANTITY
			1779B	6062A	
51135	TIMBER PILES FURNISHED, UNDRIVEN	LFT.			
51140	TIMBER PILES DRIVEN, UNDRIVEN	LFT.			
51145	TIMBER PILES FURNISHED, TREATED	LFT.			
51150	TIMBER PILES DRIVEN, TREATED	LFT.			
51155	PILE SHEETS FURNISHED AND DRIVEN (12 INCH)	LFT.			
51160	PILE SHEETS FURNISHED AND DRIVEN (14 INCH)	LFT.			
51185	STEEL II PILES FURNISHED AND DRIVEN (8 RP 36)	LFT.			
51190	STEEL II PILES FURNISHED AND DRIVEN (10 RP 42)	LFT.			
51195	STEEL II PILES FURNISHED AND DRIVEN (12 RP 53)	LFT.			
51156	POXY COATED PILE SHEETS FURNISHED AND INSTALLED (12 IN)	LFT.			
51157	POXY COATED PILE SHEETS FURNISHED AND INSTALLED (14 IN)	LFT.			
51210	PILE ENCASMENT (CONCRETE)	LFT.			
	REMOVAL OF PRESENT STRUCTURE PORTIONS (1779B)	LSUM	1		1
	REMOVAL OF PRESENT STRUCTURE PORTIONS (6062A)	LSUM		1	1
51330	REMOVAL OF PRESENT STRUCTURE	LSUM			
51366	CONCRETE SLOPPED, 5 INCH	SYS.			
51367	CONCRETE SLOPPED, 4 INCH	SYS.			
51369	REMOVAL OF CONCRETE SLOPPED	SYS.			
51365	SLOPPED	SYS.			
51370	RIPRAP	TON			
51375	REMOVED RIPRAP	TON	185		185
51372	DUMPED RIPRAP	TON			
52603	NO. 2 AGGREGATE (CLASS A, B OR C)	TON			
51374	PLASTIC FILTER CLOTH	SYS.	222		222
51500	RESHAPING SPILL SLOPES	LSUM			
51863	FIELD DRILLED HOLES IN CONCRETE	EACH	240	424	664
51864	FIELD DRILLED HOLES	EACH			
51866	RIVETS REMOVED	EACH			
51867	STRUCTURAL STEEL CUTTING	SIN.			
51833	CONCRETE SCABBING	S.S.			
51837	BLASTING AND CLEANING PARTIAL DEPTH BRIDGE DECK PATCHING	SFT.	265	525	790
51401	FULL DEPTH PATCHING	SFT.			
51842	BRIDGE DECK OVERLAY	SYS.	290	509	799
51845	BRIDGE DECK SURFACE	SYS.			
51838	FINISHING AND CURING	SYS.			
51846	ADDITIONAL BRIDGE DECK OVERLAY	CYS.	4	7	11
52412	REMOVAL OF BITUMINOUS OVERLAY	SYS.			
51874	OVERLAY DAM	SFT.	40	132	172
02272	BREAKING UP PAVED SIDE DITCH	LFT.	10		10
02271	SURFACE MILLING, PORTLAND CEMENT CONCRETE	SYS.	290	509	799
02238	SURFACE MILLING, BITUMINOUS	SYS.	270	280	550
51859	PAINTING OLD STEEL BRIDGE	LSUM			
51861	PAINTING BEARING ASSEMBLIES	LSUM			

BITUMINOUS MIXTURE FOR APPRS. (TONS)			
STR. NO.	1779B	6062A	TOTAL
WEDGES	61	48	109
RELIEF JTS.	12		12
WIDENING	466	240	706
SHOULDERS		154	154
TERMINAL JT.		12	12
TOTAL	539	454	993

APPROACH PAY ITEMS					
CODE NO.	DESCRIPTION	UNIT	STRUCTURE		TOTAL QUANTITY
			1779B	6062A	
52370	CLEARING RIGHT-OF-WAY	LSUM			
02020	UNCLASSIFIED EXCAVATION	CYS.			
52240	COMMON EXCAVATION	CYS.			
02045	EXCAVATION FOR SUBGRADE TREATMENT	CYS.			
52245	BORROW	CYS.	170		170
52250	B BORROW FOR STRUCTURE BACKFILL	CYS.			
52280	CONCRETE PAVEMENT REINFORCED (17 INCH)	SYS.			
52285	CONCRETE PAVEMENT REINFORCED (8 INCH)	SYS.			
52290	CONCRETE PAVEMENT REINFORCED (9 INCH)	SYS.			
52300	CONCRETE PAVEMENT REINFORCED (10 INCH)	SYS.	128	104	232
	PLAIN CONCRETE PAVEMENT (EACH)	SYS.			
52303	REMOVAL OF PAVEMENT	SYS.	31	16	47
02235	BREAKING PAVEMENT	SYS.			
52490	TEMPORARY JOINT	LFT.			
52495	CONTRACTION JOINT, TYPE D-1	LFT.			
52711	CONCRETE SIDEWALK	SYS.			
52710	REMOVAL OF CONCRETE SIDEWALK	SYS.			
52605	AGGREGATE FOR SHOULDER DRAIN	TON			
52610	AGGREGATE FOR UNDER DRAINS	CYS.			
52305	TYPE P COMPACTED AGGREGATE FOR BASE (SIZE NO. 53)	TON	43	35	78
52308	TYPE O COMPACTED AGGREGATE FOR BASE (SIZE NO. 53)	TON			
52310	SUBBASE	CYS.			
52311	SPECIAL SUBBASE	TON			
5244	OPEN GRADED BITUMINOUS BASE NO. 5	TON			
52445	BITUMINOUS BASE	TON			
52452	BITUMINOUS BASE (SIZE NO. 5D)	TON			
52451	BITUMINOUS BINDER	TON			
52450	BITUMINOUS SURFACE	TON			
52470	BITUMINOUS MIXTURE FOR APPROACHES (SEE TABLE BELOW)	TON	329	454	793
52456	BITUMINOUS MATERIAL FOR TACK COAT	SYS.	1004	783	1787
52461	BITUMINOUS MATERIAL FOR PRIME COAT	SYS.			
04348	SEAL COAT TYPE 2	SYS.			
04351	SEAL COAT TYPE 5	SYS.			
52413	REMOVAL OF BITUMINOUS SURFACE	SYS.			
52500	GUARD RAIL, TYPE A	LFT.			
52510	GUARD RAIL, TYPE B (MODIFIED)	LFT.	407.3	400.0	807.3
52511	GUARD RAIL, TYPE C	LFT.			
52512	GUARD RAIL, TYPE D	LFT.			
52520	GUARD RAIL, TYPE E	LFT.			
52525	GUARD RAIL, TYPE F	LFT.			
52530	GUARD RAIL, TYPE G	LFT.			
52538	GUARD RAIL, TYPE H (MODIFIED)	LFT.	400	400	800
52538	GUARD RAIL END TREATMENT TYPE I	EACH	2	4	6
52539	GUARD RAIL END TREATMENT TYPE II	EACH			
52496	RESET GUARD RAIL	LFT.	30		30
52535	REMOVAL OF GUARD RAIL	LFT.	34.4	548	902
52841	IMPACT MITIGATION, SAND BARREL ARRAY AND PAD	EACH			
52360	RIGHT-OF-WAY MARKERS	EACH			
06500	MONUMENT, TYPE A	EACH			
06505	MONUMENT, TYPE B	EACH			
06510	MONUMENT, TYPE C	EACH			
06515	MONUMENT, TYPE D	EACH			
52851	SECTION CORNER MONUMENT	EACH			
	ADJUST HOUSING FOR TRAFFIC SIGNAL DETECTOR TO GRADE	EACH	1		1

APPROACH PAY ITEMS					
CODE NO.	DESCRIPTION	UNIT	STRUCTURE		TOTAL QUANTITY
			1779B	6062A	
07025	PIPE, GR. A (0.064" FRCSS) 12"	LFT.			
07075	PIPE, GR. A (0.064" FRCSS) 15"	LFT.			
07125	PIPE, GR. A (0.064" FRCSS) 18"	LFT.			
07175	PIPE, GR. A (0.064" FRCSS) 24"	LFT.			
07225	PIPE, GR. A (0.064" FRCSS) 30"	LFT.			
07275	PIPE, GR. A (0.064" FRCSS) 36"	LFT.			
07325	PIPE, GR. A (0.064" FRCSS) 42"	LFT.			
10000	PIPE, GR. D (0.064" CS) 12"	LFT.			
10025	PIPE, GR. D (0.064" CS) 15"	LFT.			
10050	PIPE, GR. D (0.064" CS) 18"	LFT.			
10075	PIPE, GR. D (0.064" CS) 24"	LFT.			
10100	PIPE, GR. D (0.064" CS) 30"	LFT.			
10125	PIPE, GR. D (0.064" CS) 36"	LFT.			
10150	PIPE, GR. D (0.064" CS) 42"	LFT.			
44255	PIPE, GR. R FOR UNDERDRAINS 6"	LFT.			
52852	PIPE, 0.052" FRCSS 6"	LFT.			
34000	PIPE, 0.052" FRC PERI., CS 6"	LFT.			
29000	PIPE, 0.064" FRCSS 12"	LFT.			
44275	PIPE, FRCSS 0.052" FOR UNDERDRAINS 6"	LFT.			
46000	PIPE END SECTION 12"	EACH			
46005	PIPE END SECTION 15"	EACH			
46010	PIPE END SECTION 18"	EACH			
46015	PIPE END SECTION 21"	EACH			
46020	PIPE END SECTION 24"	EACH			
46025	PIPE END SECTION 27"	EACH			
46030	PIPE END SECTION 30"	EACH			
46035	PIPE END SECTION 33"	EACH			
46040	PIPE END SECTION 36"	EACH			
52375	CONCRETE CLASS A IN STRUCTURE	CYS.			
52376	CONCRETE CLASS C IN STRUCTURE	CYS.			
06335	PAVED SIDE DITCH TYPE A	LFT.			
06340	PAVED SIDE DITCH TYPE B	LFT.			
06345	PAVED SIDE DITCH TYPE C	LFT.			
06350	PAVED SIDE DITCH TYPE D	LFT.			
06355	PAVED SIDE DITCH TYPE E	LFT.			
06360	PAVED SIDE DITCH TYPE F	LFT.			
06365	PAVED SIDE DITCH TYPE G	LFT.			
53071	REMOVAL OF PAVED SIDE DITCH	SYS.			
52836	CASTING ADJUSTED TO GRADE	EACH			
52831	DRILLED HOLES FOR MUDJACKING	EACH	4		4
52830	MATERIALS FOR MUDJACKING	CYS.	2		2
52448	"DO NOT SPRAY" SIGNS	EACH	6		6
52380	SODDING	SYS.			
52381	SODDING (NURSERY)	SYS.			
52382	MULCHED SEEDING (LEGUME)	SYS.	590		590
52395	SEED MIXTURE "OV"	LBS.	10		10
52391	SEED MIXTURE (GRASS)	LBS.			
52400	MULCHING MATERIAL	TON			
52405	FERTILIZER	TON			
52410	WATER	MG.			
52415	AGRICULTURAL LIMESTONE	TON			
52401	MULCHING MATERIAL (WOOD CELLULOSE FIBER)	TON			
52447	STRAW BALES IN PLACE	EACH			
06770	DELINATOR POST	EACH			
06740	47" FBCE, FARM FIELD	LFT.			
06045	48" FBCE, CHAIN LINK	LFT.			
	MOBILIZATION AND DEMOBILIZATION FOR SEEDING	EACH	2		2

TRAFFIC PAY ITEMS					
CODE NO.	DESCRIPTION	UNIT	STRUCTURE		TOTAL QUANTITY
			1779B	6062A	
	MAINTAINING TRAFFIC (1779B)	LSUM	1		1
	MAINTAINING TRAFFIC (6062A)	LSUM		1	1
51335	TEMPORARY BRIDGE AND APPROACHES	LSUM			
52818	TEMPORARY CROSSOVER TYPE A	EACH			
52819	TEMPORARY CROSSOVER TYPE B	EACH			
53072	TEMPORARY TRAFFIC SIGNAL (6062A)	LSUM		1	1
52436	TEMPORARY CONCRETE BARRIER	LFT.	700	810	1510
52845	TEMPORARY IMPACT ATTENUATION DEVICE (3'BY 6'GREAT '22 UNIT)	EACH	2		2
52340	CONSTRUCTION SIGNS TYPE A	EACH	17	25	42
52345	CONSTRUCTION SIGNS TYPE B	EACH	2	2	4
52346	STANDARD BARRICADES (TYPE III-A)	EACH			
52347	STANDARD BARRICADES (TYPE III-B)	EACH			
76020	SHEET SIGNS-TYPE I WITH LEGEND (0.98 in. THICKNESS)	SFT.			
76025	SHEET SIGNS-TYPE II WITH LEGEND (0.98 in. THICKNESS)	SFT.			
76030	SHEET SIGNS-TYPE I WITH LEGEND (0.100 in. THICKNESS)	SFT			